

MONDAY ▪ OCTOBER 15, 2018

 <p>PRE-CONFERENCE TRACK ONE</p>	 <p>PRE-CONFERENCE TRACK TWO</p>
<p>7:30 a.m. – 8:00 a.m. Registration & Continental Breakfast Pennsylvania Ballroom (Lobby Level)</p>	<p>6:30 a.m. – 7:00 a.m. Registration & Continental Breakfast Commonwealth Ballroom Foyer</p>
<p>8:00 a.m. – Noon AAAM Abbreviated Injury Scale (AIS-o8) Coding Course Day 1 of 2, detailed agenda attached Pennsylvania Ballroom</p> <p><u>AAAM Instructors:</u> Greg Klaus, RN, CEN, CSTR, CAISS Adult Trauma Coordinator, Yale New Haven Hospital</p> <p>Donna Nayduch, MSN, RN, ACNP, TCRN, CAISS Assistant Vice President Trauma, North Florida Division, HCA; Faculty, University South Florida School of Nursing</p> <p>Scheduled, in-room breaks 9:45 a.m. & 3:00 p.m.</p>	<p>7:00 a.m. – 11 a.m. Hands-On PAV5 Outcomes™ Course Commonwealth Ballroom, Salons CDE & 11 a.m. – Noon Hands-On Basic Excel Training Course Commonwealth Ballroom, Salons CDE</p> <p><u>DI Staff Instructors:</u> James Pou, Project Manager, Outcomes/Coding/Report Writer Glendene Strickland, Senior Analyst Kathleen Yetter, Project Manager & Business Analyst</p> <p>Scheduled break at 9:45 a.m. Commonwealth Ballroom Foyer</p>
<p>Noon – 1:00 p.m. Buffet Lunch ▪ Commonwealth Ballroom, Salon A</p>	
<p>AIS-o8 Coding Course continues . . .</p>	<p>1:00 p.m. – 3:00 p.m. PA-TQIP Collaborative Meeting Commonwealth Ballroom, Salon B</p>

3:00 p.m. – 3:30 p.m.
 Break
 Commonwealth Ballroom Foyer

3:30 p.m. – 4:30 p.m.
 PATNAC Meeting
 (membership-only)
 Commonwealth Ballroom, Salon B

3:30 p.m. – 4:30 p.m.
 PaCOT Meeting
 (membership-only)
 Commonwealth Ballroom, Salon A

EVENING MEETINGS ▪ MEMBERS & INVITED GUESTS

4:30 p.m. refreshments provided ▪ Commonwealth Ballroom Foyer

5:00 p.m.
 Copeland Council
 Commonwealth Ballroom
 Salon C

5:00 p.m.
 The PENN Trauma Network
 Commonwealth Ballroom
 Salon D

5:00 p.m.
 The Geisinger Trauma Network
 Commonwealth Ballroom
 Salon E

TUESDAY ▪ OCTOBER 16, 2018

GENERAL SESSION

7:00 a.m. – 7:30 a.m.*

Registration & Continental Breakfast
Commonwealth Ballroom Foyer

*Day 2 of AAAM AIS Coding Course ▪ Continental Breakfast 7:30 a.m. ▪ Course begins at 8:00 a.m.

7:30 a.m. – 8:30 a.m.

“Finding Our Voice”

Optimizing Pennsylvania’s Trauma System
2018-2020 PTSF Strategic Plan ▪ Background, Development & Overview
Commonwealth Ballroom ▪ Salons B-CDE

Presented by:

Juliet Altenburg, MSN, RN—PTSF Executive Director

Hon. Bryan Cutler, PTSF Board Member—PA House of Representatives, 100th Legislative District

Patrick Reilly, MD, FCCP, FACS, PTSF Board Chairman—Chief, Division of Traumatology Surgical Critical Care & Emergency Surgery,
PENN Medicine – Penn Presbyterian Medical Center

Frederick B. Rogers, MD, MS, FACS—Division Chief of Trauma, PENN Medicine – Lancaster General Health, Lancaster General Hospital
Denise Torres, MD, FACS—Trauma Program Medical Director, Geisinger Medical Center

8:30 a.m. – 8:45 a.m.

Break ▪ Commonwealth Foyer

8:45 a.m. – 11:00 a.m.

5th Annual PTOS Trauma Research Session
Commonwealth Ballroom ▪ Salons B-CDE

Moderated by:

Niels Martin, MD, FACS—PTSF Trauma Research Committee Chairman, Section Chief, Surgical Critical Care;

Program Director, Traumatology & Surgical Critical Care Fellowship, Penn Presbyterian Medical Center;

Assistant Professor of Surgery, University of Pennsylvania School of Medicine

A separate agenda including all presenters/research projects is included.

A scheduled break will occur during this session based upon presentation times—approximately 9:45 a.m.

11:00 a.m. – 12:30 p.m.*

Buffet Luncheon ▪ Commonwealth Ballroom, Salon A

or

PTSF Committees “Working Lunch” (members-only) ▪ Lower Level Foyer -- Outside of Meeting Rooms

- Standards Committee—members & invited guests (Dogwood & Chestnut Rooms)
- Trauma Injury Prevention Committee—members & invited guests (Birch & Ash Rooms)
- PIPS Committee—members & invited guests (Elm & Fir Rooms)
- Trauma Research Committee—members & invited guests (Hemlock Room)

*AAAM AIS Coding Course ▪ Buffet Luncheon ▪ Commonwealth Ballroom, Salon A ▪ Noon – 12:45 p.m.

PaCOT TRACK	PERFORMANCE IMPROVEMENT TRACK	TRAUMA INJURY PREVENTION TRACK
<p>12:30 p.m. – 4:45 p.m. PaCOT Annual Resident Trauma Paper Competition Commonwealth Ballroom Salon B</p> <p><u>Moderated by:</u> Simon D. Lampard, MD, FACS PaCOT Chair PTSF Board Member Trauma Program Medical Director UPMC Altoona</p> <p>A separate agenda including all presenters/research papers is included</p>	<p>12:30 p.m. – 2:00 p.m. Taxonomy Trivia A Panel Discussion Commonwealth Ballroom Salons CDE</p> <p><u>Moderated by:</u> Terry Snaveley, MSN, RN, TCRN Manager of Performance Improvement</p> <p><u>Presented by:</u> Julie Donnelly, MSN, RN Trauma Program Manager, Thomas Jefferson University Hospital</p> <p>Leda Heidenreich, MSN, RN, CCRN Trauma PI Coordinator, UPMC Mercy</p> <p>Susan Lampariello, BSN, RN Trauma PI Coordinator PennState Health Milton S. Hershey Medical Center</p> <p>Nicole Olszewski, RN, Trauma PI Coordinator, Thomas Jefferson University Hospital</p> <p>Patricia Palubinsky, BSN, RN, CCRN Trauma PI Coordinator PennState Health Milton S. Hershey Medical Center</p>	<p>12:30 p.m. – 1:30 p.m. Trauma Injury Prevention Sub-Committee Break-Out Meetings</p> <p>Dogwood/Chestnut Rooms Birch/Ash Rooms Elm/Fir Rooms</p>

PaCOT TRACK	PERFORMANCE IMPROVEMENT TRACK	TRAUMA INJURY PREVENTION TRACK
<p>PaCOT Trauma Paper Competition <i>continues</i></p>	<p>2:00 p.m. – 2:15 p.m. Break • Commonwealth Foyer</p>	<p>2:00 p.m. – 2:15 p.m. Break • Commonwealth Foyer</p>
	<p>2:15 p.m. – 3:15 p.m. Impact of Transfer Timelines on Trauma Patient Outcomes Commonwealth Ballroom Salons CDE</p> <p><u>Moderated by:</u> Terry Snavelly, MSN, RN, TCRN Manager of Performance Improvement</p> <p><u>Presented by:</u> Alexandra Evans, BSN, RN Trauma Program Manager Lehigh Valley Health Network Hazleton</p>	<p>2:30 p.m. – 4:00 p.m. Stop the Bleed Train-the-Trainer Course Birch & Ash Rooms</p> <p><u>Presented by:</u> Deb Erdman, MSN, RN, CCRN, TCRN Outreach/Injury Prevention Coordinator Geisinger Medical Center</p>
	<p>3:15 p.m. – 3:30 p.m. Break • Commonwealth Foyer</p>	
	<p>3:30 p.m. – 4:30 p.m. Staff Resilience: A Leadership Perspective Commonwealth Ballroom Salons CDE</p> <p><u>Presented by:</u> Michelle Conley, DNP, MBA, RN Senior Vice President & Chief Nursing Officer Jefferson Northeast</p> <p>Donna Titus, MSN, RN, CEN Trauma Program Manager Jefferson Health Torresdale</p>	

PaCOT TRACK	PERFORMANCE IMPROVEMENT TRACK	TRAUMA INJURY PREVENTION TRACK
<p>4:45 p.m. PaCOT Annual Resident Trauma Paper Competition</p> <p>AWARDS CEREMONY Commonwealth Ballroom Salon B</p>		
<p style="text-align: center;">5:00 p.m. – 6:30 p.m.</p> <p style="text-align: center;">PaCOT sponsors the 8th Annual Trauma Poster & Networking Reception Commonwealth Ballroom Foyer & Salon A</p> <p style="text-align: center;">All conference attendees are invited to attend this event; Many poster authors will be available to answer your questions.</p> <p>*AAAM AIS Coding Course ends at 4 p.m.</p>		

WEDNESDAY ▪ OCTOBER 17, 2018

GENERAL SESSION

6:30 a.m. – 7:30 a.m.

Registration & Full Breakfast Buffet
Commonwealth Ballroom ▪ Salons B-CDE

7:30 – 8:30 a.m.

10th Annual Maj. John P. Pryor, MD, FACS Memorial Lecture

THE ONE OCTOBER SHOOTINGS IN LAS VEGAS

a summary of events and lessons learned

Commonwealth Ballroom ▪ Salons B-CDE

Moderated by:

Donna Titus, MSN, RN, CEN—PATNAC President
Trauma Program Manager, Jefferson Health Torresdale

Presented by:

John Fildes, MD, FACS, FCCM (Hon)
Professor & Inaugural Chair of the Department of Surgery, Chief of the Division of Acute Care Surgery
University of Nevada, Las Vegas School of Medicine

8:40 – 9:40 a.m.

TURNING PUBLIC NARRATIVE INTO ACTION!

Commonwealth Ballroom ▪ Salons B-CDE

Moderated by:

Juliet Altenburg, MSN, RN—Executive Director
Pennsylvania Trauma Systems Foundation

Presented by:

Joseph V. Sakran, MD, MPH, MPA, FACS
Assistant Professor of Surgery, Director of Emergency General Surgery, Associate Chief of the Division of Acute Care Surgery
Johns Hopkins Medicine, The Johns Hopkins Hospital ▪ Baltimore, Maryland

ACCREDITED TRAUMA TRACK (ALL LEVELS)	LEVEL 3 & LEVEL 4 TRAUMA TRACK ALL LEVELS INVITED TO ATTEND	TRAUMA REGISTRY TRACK ALL LEVELS INVITED TO ATTEND
<p>9:50 a.m. – 10:50 a.m. Bleeding Kills: Toward Zero Preventable Deaths Commonwealth Ballroom Salons B-CDE</p> <p><u>Presented by:</u> Andrew B. Peitzman, MD, FACS Executive Vice-Chair & Vice-Chair for Clinical Services, Distinguished Professor of Surgery, Mark M. Ravitch Chair in Surgery, Chief, Division of General Surgery, Vice- President for Trauma & Surgical Services UPMC Presbyterian</p>	<p>9:50 a.m. – 10:20 a.m. Just Say Yes, a Plan & Process for Rapid Transfer Out Pennsylvania Ballroom</p> <p><u>Presented by:</u> Alexandra Evans, BSN, RN Trauma Program Manager Lehigh Valley Health Network Hazleton</p> <p>10:20 a.m. – 10:50 a.m. Hierarchy Process for Transfer Out Pennsylvania Ballroom</p> <p><u>Presented by:</u> Jill Shultz, BSN, RN Trauma Program Coordinator St. Luke’s University Health Network Quakertown Campus</p>	<p>9:50 a.m. – 10:50 a.m. 2018 Educational Visit Summary Commonwealth Ballroom Salon A</p> <p><u>Presented by:</u> Gabrielle Wenger, RHIT, CPC, CAISS Trauma Registry Auditor Pennsylvania Trauma Systems Foundation</p>
	<p>11:00 a.m. – 11:30 a.m. Billing for Level 4 Trauma Activation Pennsylvania Ballroom</p> <p><u>Presented by:</u> Kristie Leshko, MSN, RN Trauma Program Coordinator St. Luke’s University Health Network Miners Campus</p> <p>11:30 a.m. – Noon PI for Inter-Facility Transfers; Intra-Network & Out-of-Network Pennsylvania Ballroom</p> <p><u>Presented by:</u> Kristie Leshko, MSN, RN Trauma Program Coordinator St. Luke’s University Health Network Miners Campus</p>	<p>11:00 a.m. – Noon Managing Your TQIP Backlog & Timeliness to the State Commonwealth Ballroom Salon A</p> <p><u>Presented by:</u> Kristine Rosancrans, RHIA, CSTR Senior Trauma Registrar Geisinger Holy Spirit</p>

Noon – 1 p.m.

Buffet Luncheon ▪ Commonwealth Ballroom ▪ Salons B-CDE

PATNAC MEMBERS	LEVEL 3 & LEVEL 4 TRAUMA TRACK ALL LEVELS INVITED TO ATTEND	TRAUMA REGISTRY TRACK ALL LEVELS INVITED TO ATTEND
<p>1:10 p.m. – 4:30 p.m. PATNAC MEMBERS PA-TNC Workgroup Birch & Ash Rooms</p> <p><u>Moderated by:</u> Donna Titus, MSN, RN, CEN PATNAC President Trauma Program Manager Jefferson Health Torresdale</p>	<p>1:10 p.m. – 1:30 p.m. Best Practices for Site Survey Survival Pennsylvania Ballroom</p> <p><u>Presented by:</u> Amy Krichten, MSN, RN, CEN, TCRN Director of Accreditation Pennsylvania Trauma Systems Foundation</p>	<p>1:10 p.m. – 1:40 p.m. Standardization of Data Sources for Registry Abstraction Commonwealth Ballroom Salon A</p> <p><u>Presented by:</u> Judy Kiss, CPC Trauma Registrar Forbes Hospital – Allegheny Health Network</p> <p>Joni Krydick Trauma Registrar Forbes Hospital – Allegheny Health Network</p>
	<p>1:30 p.m. – 2:20 p.m. Changing the Trauma Culture Within a Facility—a Panel Discussion Pennsylvania Ballroom</p> <p><u>Moderated by:</u> Dave Bradley, BS, NRP Manager of Trauma Center Development Pennsylvania Trauma Systems Foundation</p>	<p>1:40 p.m. – 2:10 p.m. DATA INTERGITY: Why it Matters & How to Validate Commonwealth Ballroom Salon A</p> <p><u>Presented by:</u> Robin L. Schrader, AAS, CSTR, CAISS Trauma Registry PI Coordinator Lehigh Valley Health Network Lehigh Valley Hospital Cedar Crest</p> <p><u>Presented by:</u> Judith M. Schultz, BA, CSTR, CAISS Trauma Registry Manager Lehigh Valley Health Network Lehigh Valley Hospital Cedar Crest</p>

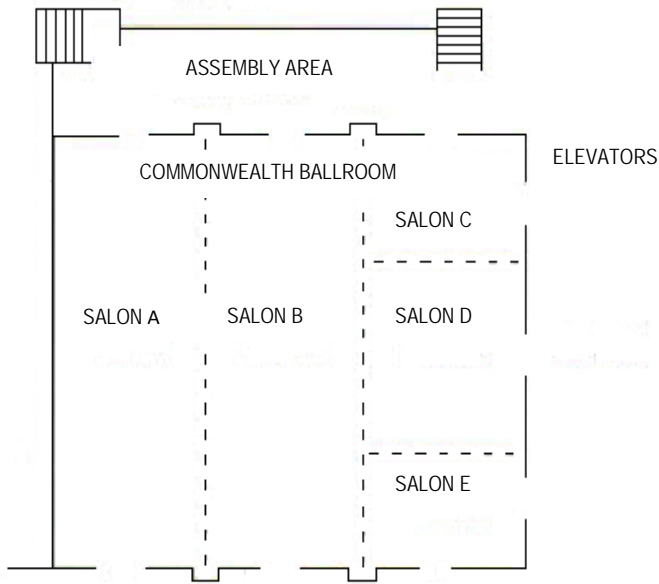
PATNAC MEMBERS	LEVEL 3 & LEVEL 4 TRAUMA TRACK ALL LEVELS INVITED TO ATTEND	TRAUMA REGISTRY TRACK ALL LEVELS INVITED TO ATTEND
<p>PA-TNC Workgroup <i>continues</i></p>	<p>2:20 p.m. – 3:20 p.m. Level 4 Trauma Workgroup Dogwood/Chestnut Rooms</p> <p><u>Moderated by:</u> Dave Bradley, BS, NRP Manager of Trauma Center Development Pennsylvania Trauma Systems Foundation</p> <p>Alexandra Evans, BSN, RN Trauma Program Manager Lehigh Valley Health Network Hazleton</p>	<p>2:20 p.m. – 3:20 p.m. Yay or Nay? PTOS Inclusion Criteria Commonwealth Ballroom Salon A</p> <p><u>Presented by:</u> Lyndsey Diehl, RHIA, CHDA, CSTR Manager of Trauma Data Quality Pennsylvania Trauma Systems Foundation</p>
<p>3:30 p.m. – 4:30 p.m. GENERAL SESSION 2019 COLLECTOR™ Update Commonwealth Ballroom ▪ Salons B-CDE</p> <p><u>Presented by:</u> Lyndsey Diehl, RHIA, CHDA, CSTR Manager of Trauma Data Quality Pennsylvania Trauma Systems Foundation</p> <p>Glendene Strickland Senior Analyst Digital Innovation, Inc.</p>		

SAVE THE DATE

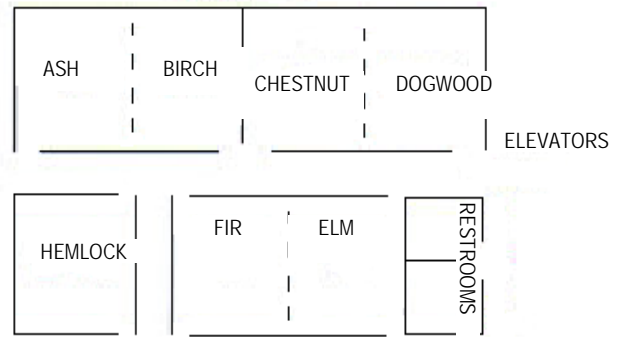
23rd Annual Fall Conference & Meeting ▪ October 16-18, 2019
 Sheraton Harrisburg-Hershey Hotel

Conference / Meeting Room Locations

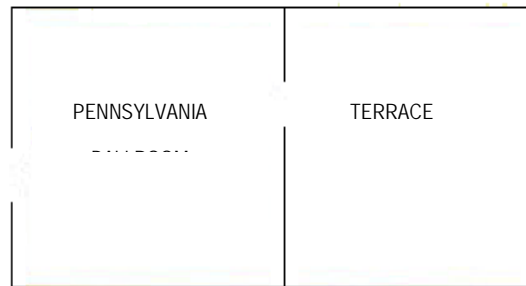
Lobby Level ~ Third Floor



**Lower Level Meeting Rooms
 First Floor**



Lobby Level ~ Third Floor



Shopping

Harrisburg Mall

Exit 45 off Interstate 83 . . . 3601 Paxton Street, Harrisburg, Pa. 17111 (approx. 2 miles from hotel)
 Anchored by Bass Pro Shops and Macy’s, including a 14-screen, digital Great Escape Movie Theater
 (www.shopharrisburgmall.com)

High Pointe Commons

Located directly behind the Sheraton Harrisburg ~ Hershey Hotel
 Several shops & eateries—including Target and Christmas Tree Hill

Additional Shopping

Colonial Park Mall—Route 22 & Colonial Road (www.colonialparkmall.com)

The Shoppes at Susquehanna Marketplace—25 Brindle Drive, Harrisburg, Pa.

(www.theshoppesatsusquehannamarketplace.com)

The Outlets at Hershey—46 Outlet Square, Hershey, Pa. (www.theoutletsatheshey.com)

Dining

Applebee’s	3501 Paxton Street ~ 717-561-2248	approx. 2 miles from hotel
Ruby Tuesdays	3391 Paxton Street ~ 717-561-0750	approx. 2 miles from hotel
Fiesta Mexico	3957 Paxton Street ~ 717-920-1553	approx. 2 miles from hotel
Melting Pot.....	3350 Paxton Street ~ 717-564-6358.....	approx. 2 miles from hotel
Lancaster Brewing Company.....	469 Eisenhower Boulevard ~ 717-564-4448.....	approx. 1 mile from hotel
Leeds	750 Eisenhower Boulevard ~ 717-564-4654	approx. ½ mile from hotel
Houlihan’s	27 W. Chocolate Avenue, Hershey ~ 717-534-3110.....	approx. 9 miles from hotel
Devon Seafood Grill	27 W. Chocolate Avenue, Hershey ~ 717-508-5460.....	approx. 9 miles from hotel
“Restaurant Row”	Downtown Harrisburg, Second Street, Harrisburg.....	approx. 5 miles from hotel
Chili’s	4611 High Pointe Boulevard ~ 717-558-8781	located behind the hotel

CONFERENCE EVALUATIONS

An electronic survey for this conference will be emailed to you.

Completion is required in order to receive educational credit.

We value your comments.

GUEST SPEAKERS • AFFILIATIONS

Michelle Conley—Jefferson Northeast
Hon. Bryan Cutler—PA House of Representatives, 100th Legislative District
Julie Donnelly—Thomas Jefferson University Hospital
Deb Erdman—Geisinger Medical Center
Alexandra Evans—Lehigh Valley Health Network Hazleton
Forrest Fernandez—Reading Hospital – Tower Health
John Fildes—University of Nevada, Las Vegas School of Medicine
Leda Heidenreich—UPMC Mercy
Judy Kiss—Forbes Hospital – Allegheny Health Network
Joni Krydick—Forbes Hospital – Allegheny Health Network
Susan Lampariello—PennState Health Milton S. Hershey Medical Center
Kristie Leshko—St. Luke’s University Health Network Miner’s Campus
Niels Martin—PENN Medicine – Penn Presbyterian Medical Center
Nicole Olszewski—Thomas Jefferson University Hospital
Patricia Palubinsky—PennState Health Milton S. Hershey Medical Center
Andrew Peitzman—UPMC Presbyterian
James Pou—Digital Innovation, Inc.
Patrick Reilly—PENN Medicine – Penn Presbyterian Medical Center
Frederick Rogers—PENN Medicine/Lancaster General Health, Lancaster General Hospital
Kristine Rosancrans—Geisinger Holy Spirit
Joseph Sakran—Johns Hopkins Medicine, The Johns Hopkins Hospital
Robin Schrader—Lehigh Valley Health Network, Lehigh Valley Hospital Cedar Crest
Judith Schultz—Lehigh Valley Health Network, Lehigh Valley Hospital Cedar Crest
Jill Shultz—St. Luke’s University Health Network Quakertown Campus
Glendene Strickland—Digital Innovation, Inc.
Donna Titus—Jefferson Health Torresdale
Denise Torres—Geisinger Medical Center
Kathleen Yetter—Digital Innovation, Inc.

STAFF • PENNSYLVANIA TRAUMA SYSTEMS FOUNDATION

Dorothea Adams—Finance Specialist
Juliet Altenburg—Executive Director
Dave Bradley—Manager of Trauma Center Development
Kevin Burd—Director of Operations
Lyndsey Diehl—Manager of Trauma Data Quality
Amy Krichten—Director of Accreditation
Stephanie Radzevick—Trauma Data Analyst
Theresa Snavely—Manager of Trauma Performance Improvement
Linda Stamey—Administrative Assistant
Gabrielle Wenger—Trauma Registry Auditor

PRE-CONFERENCE SESSION • PENNSYLVANIA BALLROOM (LOBBY LEVEL)

AISo8 & Injury Scaling: Uses & Techniques

Monday, October 15, 2018—Day 1 of 2

7:30 a.m.	Registration & Continental Breakfast
8:00 a.m.	Introduction, Course Materials & Review of Agenda
8:05 a.m.	Class Introductions
8:20 a.m.	Topics for Presentation & Discussion <ul style="list-style-type: none"> ▪ Introduction to the Abbreviated Injury Scale (AIS) ▪ The AIS: Its Structure, Organization & Contents ▪ Multiple Injuries & the Injury Severity Score (ISS) ▪ Injuries & Severity Coding
9:45 a.m.	Refreshment Break (in-room)
10:00 a.m.	Topics for Presentation & Discussion <ul style="list-style-type: none"> ▪ Injury Coding: Rules & Guidelines ▪ Abstracting Injury Data
10:45 a.m.	External ISS Body Region <ul style="list-style-type: none"> ▪ Region-specific rules & guidelines ▪ Dictionary exercise ▪ Group Exercise: Abstracting & coding a chart
11:15 a.m.	Face ISS Body Region <ul style="list-style-type: none"> ▪ Region-specific rules & guidelines ▪ Dictionary exercise ▪ Cases
Noon	Buffet Luncheon (Commonwealth Ballroom, Salon A)
12:45 p.m.	Face ISS Body Region (continued)
1:15 p.m.	Chest ISS Body Region <ul style="list-style-type: none"> ▪ Region-specific rules & guidelines ▪ Dictionary exercise ▪ Cases
3:00 p.m.	Refreshment Break (in-room)

3:15 p.m.	Abdomen ISS Body Region <ul style="list-style-type: none"> ▪ Region-specific rules & guidelines ▪ Dictionary exercise ▪ Cases
5:00 p.m.	Class adjourns for the day

Tuesday, October 16, 2018—Day 2 of 2

7:30 a.m.	Continental Breakfast
8:00 a.m.	Head/Neck ISS Body Region <ul style="list-style-type: none"> ▪ Region-specific rules & guidelines ▪ Dictionary exercise ▪ Cases
10:00 a.m.	Refreshment Break (in-room)
10:20 a.m.	Spine Injuries <ul style="list-style-type: none"> ▪ Region-specific rules & guidelines ▪ Dictionary exercise ▪ Cases
11:15 a.m.	Extremities ISS Body Region <ul style="list-style-type: none"> ▪ Region-specific rules & guidelines ▪ Dictionary exercise ▪ Cases
Noon	Buffet Luncheon (Commonwealth Ballroom, Salon A)
12:45 p.m.	Extremities ISS Body Region (continued)
1:00 p.m.	Pre-Quiz Review
1:15 p.m.	Multiple Body Region Injuries <ul style="list-style-type: none"> ▪ Cases
2:15 p.m.	Refreshment Break (in-room)

2:30 p.m.	Multiple Body Region Injuries
3:00 p.m.	POST COURSE QUIZ
3:45 p.m.	Course Summary & Evaluations
4:00 p.m.	Class adjourns

Couse attendees are invited to attend:

5:00 p.m. – 6:30 p.m.

Pennsylvania Committee on Trauma (PaCOT) sponsored
8th Annual Trauma Poster & Networking Reception
Commonwealth Ballroom Foyer & Salon A

Many poster authors will be available to answer your questions
Appetizers, open bar are included

COURSE INSTRUCTORS ▪ BIOS

GREG KLAUS, RN, CEN, CSTR, CAISS

Greg has spent much of his career in emergency nursing. He graduated from the Baystate Medical Center School of Nursing with a Diploma in Nursing in 1981. He completed his undergraduate degree in Nursing in 2001 at Central Connecticut State University.

Greg is also a member of CT-1 Disaster Medical Assistance Team for the National Disaster Medical System, US Health & Human Services. He has had several deployments throughout the United States in support of Federal disaster response efforts, most recently post-hurricane in Puerto Rico.

Greg has been AIS faculty since 2014 and is currently the Adult Trauma Coordinator at Yale New Haven Hospital (Level I Trauma Center).

DONNA NAYDUCH, RN, MSN, ACNP, TCRN, CAISS

Donna is the Assistant Vice President for Trauma, North Florida Division for HCA. The North Florida Division includes four Level II trauma centers. This area of Florida is home to the country's largest retirement community, nearby Citrus County—the country's highest elder population, Destin—one of the state's most popular vacation destinations, and Kissimmee—with the Disney theme parks.

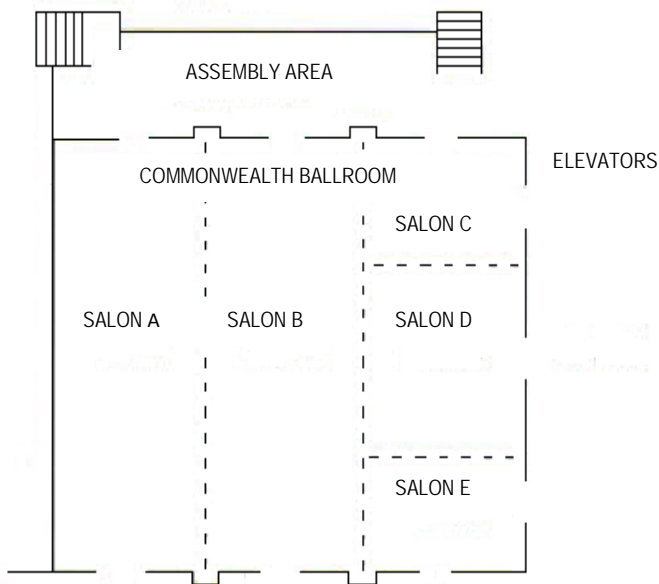
Previously, Ms. Nayduch worked as a trauma consultant working primarily with start-up trauma programs, developing their registry and performance improvement programs from the ground up. She is known for her publication, "Nurse to Nurse Trauma Care" a definitive guide to trauma. She has also been the Regional Trauma Services Director for the Banner Health System in Greeley, Colorado. Previous positions also include: Trauma Nurse Coordinator at Duke University Medical Center and Clinical Associate at the Graduate School of Nursing. She also served as an adjunct faculty member at the Graduate School of Nursing of the University of North Carolina in Chapel Hill and clinical preceptor at several graduate schools of nursing in North Carolina and Virginia. She previously held the position of Trauma Nurse Coordinator at Saint Vincent Health Center in Erie, Pennsylvania.

Ms. Nayduch received her Bachelor of Science Degree in Nursing from College Misericordia in Dallas, Pennsylvania. She completed an Accelerated Critical Care Internship program at Lehigh Valley Hospital Center in Allentown, Pennsylvania, and obtained her Master's Degree in Nursing from Allentown College St. Francis DeSales in Center Valley, Pennsylvania. She holds 2 post-graduate degrees as an ACNP in trauma from UVA and a Forensic clinical nurse specialist degree from UCCS.

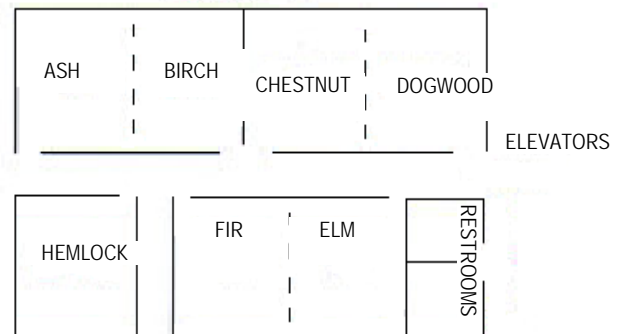
She is a member of the Society for Critical Care Medicine, the Society of Trauma Nurses, American Trauma Society, and EAST. During her employment in North Carolina, she served on the North Carolina State Trauma Systems Task Force and was Executive Director of the American Trauma Society, North Carolina Division. →She serves multiple committee positions including the Transfusion practice management guideline task force for SCCM, the membership and bylaws committee of EAST and has participated in multiple practice management guideline development groups in EAST. Ms. Nayduch has numerous publications to her credit and has lectured extensively on trauma care.

Conference / Meeting Room Locations

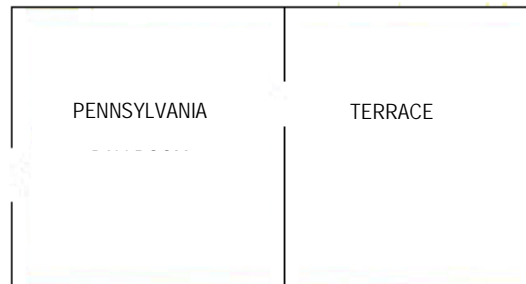
Lobby Level ~ Third Floor



**Lower Level Meeting Rooms
First Floor**



Lobby Level ~ Third Floor



Shopping

Harrisburg Mall

Exit 45 off Interstate 83 . . . 3601 Paxton Street, Harrisburg, Pa. 17111 (approx. 2 miles from hotel)
 Anchored by Bass Pro Shops and Macy’s, including a 14-screen, digital Great Escape Movie Theater
 (www.shopharrisburgmall.com)

High Pointe Commons

Located directly behind the Sheraton Harrisburg ~ Hershey Hotel
 Several shops & eateries—including Target and Christmas Tree Hill

Additional Shopping

Colonial Park Mall—Route 22 & Colonial Road (www.colonialparkmall.com)

The Shoppes at Susquehanna Marketplace—25 Brindle Drive, Harrisburg, Pa.
 (www.theshoppesatsusquehannamarketplace.com)

The Outlets at Hershey—46 Outlet Square, Hershey, Pa. (www.theoutletsatheshey.com)

Dining

Applebee’s	3501 Paxton Street ~ 717-561-2248	approx. 2 miles from hotel
Ruby Tuesdays	3391 Paxton Street ~ 717-561-0750	approx. 2 miles from hotel
Fiesta Mexico	3957 Paxton Street ~ 717-920-1553	approx. 2 miles from hotel
Melting Pot.....	3350 Paxton Street ~ 717-564-6358.....	approx. 2 miles from hotel
Lancaster Brewing Company.....	469 Eisenhower Boulevard ~ 717-564-4448.....	approx. 1 mile from hotel
Leeds	750 Eisenhower Boulevard ~ 717-564-4654	approx. ½ mile from hotel
Houlihan’s	27 W. Chocolate Avenue, Hershey ~ 717-534-3110.....	approx. 9 miles from hotel
Devon Seafood Grill	27 W. Chocolate Avenue, Hershey ~ 717-508-5460.....	approx. 9 miles from hotel
“Restaurant Row”	Downtown Harrisburg, Second Street, Harrisburg.....	approx. 5 miles from hotel
Chili’s	4611 High Pointe Boulevard ~ 717-558-8781	located behind the hotel

PRESENTED BY THE PTSF TRAUMA RESEARCH COMMITTEE

5th ANNUAL PTOS TRAUMA RESEARCH SESSION

Candidates completed research studies utilizing the PTOS statewide trauma registry database. 1st, 2nd and 3rd place winners will be selected by the PTSF Trauma Research Committee at the Conference.

1. Logistics of Air Medical Transport: When & Where Does Helicopter Transport Reduce Prehospital Time?

Joshua B. Brown, MD, MSc*, Mark L. Gestring, MD, FACS*, Matthew R. Rosengart, MD, MPH, FACS*, Xilin Chen, Andrew B. Peitzman, MD*, Timothy Billiar, MD, Jason L. Sperry, MD, MPH*, University of Pittsburgh Medical Center.

Presenter: Joshua Brown, MD, MSc

2. Pediatric train injuries: A 10-year review from the Pennsylvania Trauma Outcomes Study database.

Erika B Lindholm MD1, Jacob Latreille BA2, Shreeja Kadakia BA2, Teerin Meckmongkol MD1, Autumn Nanassy MA1, Sean Ciullo MD1, L. Grier Arthur MD 1, Harsh Grewal MD1 and Rajeev Prasad MD. St. Christopher's Hospital for Children.

Presenter: Christopher Pennell, MD

3. Development of a Clinical Tracheostomy Score to Identify Spinal Cord Injury Patients Requiring Prolonged Ventilator Support.

Scantling D, Meckmongkol T, McCracken B. Hahnemann University Hospital.

Presenter: Dane Scantling, MD

4. Outcomes for Hypotensive Trauma Patients by Admission Time and Day.

1Jacqueline Speer, DO, 2Adrian Ong, MD, 3Alison Muller, MLS, MSPH, 4Niels Martin, MD, 5Anthony Martin, RN, BSN, 6Amanda McNicholas, CRNP, 7Patrick Kim, MD, 8Forrest Fernandez, MD. 1 Dept. of Surgery, Philadelphia College of Osteopathic Medicine, 2,3,5,6,8 Dept. of Surgery, Section of Trauma and Acute Care Surgery, Reading Hospital 4,7 Division of Traumatology, Surgical Critical Care and Emergency Surgery, Dept. of Surgery, University of Pennsylvania.

Presenter: Adrian Ong, MD (2017 PTSF Winner of best PTOS data request.)

5. Analysis of Outcomes of Post-Operative Management of Truncal GSW at Level I versus Level II Trauma Centers.

Daniel Wu DO, FACS; Shreya Jammula BS; Brian W. Gross BS; Chet A. Morrison MD, FACS; Alan D. Cook MD, FACS; Madison Morgan, Frederick B. Rogers MD, FACS. Lancaster General Health/Penn Medicine, Lancaster, PA, USA.

Presenter: Tawnya Vernon BA

6. Trauma Super-Users – A Drain on the System.

Tawnya M. Vernon BA; Shreya Jammula BS; Eric H. Bradburn DO, FACS; Alan D. Cook MD, FACS; Brian Gross BS; Frederick B. Rogers MD, FACS. Lancaster General Health/Penn Medicine, Lancaster, PA, USA.

Presenter: Eric Bradburn DO, MS, FACS

PRESENTED BY THE PENNSYLVANIA COMMITTEE ON TRAUMA:

RESIDENT TRAUMA PAPER COMPETITION

12:30 p.m.	<p>Opening Remarks & Overview</p> <p><u>Moderated by:</u> Simon D. Lampard, MD, FACS—PaCOT Chair Trauma Program Medical Director UPMC Altoona</p>
<ul style="list-style-type: none"> ▪ Each participant will have 15 minutes at the podium, including 10-minutes for presentation and 5-minutes for Q&A ▪ PowerPoint slides can be loaded between presentations ▪ Audio-visual staff will be on-hand to assist presenters 	
12:40 p.m. – 12:55 p.m.	<p>Association Between Timing of Traumatic Thoracic Aortic Injury Repair & Outcome: A National Trauma Databank (NTDB) Study</p> <p><u>Presented by:</u> Mahdi Malekpour, MD Surgery Resident – PGY-2 Geisinger Medical Center</p>
1:00 p.m. – 1:15 p.m.	<p>A Novel Protocol to Maintain Continuous Access to Thawed Plasma at a Rural Trauma Center</p> <p><u>Presented by:</u> Cara Hannigan, MD General Surgery Resident – PGY-3 Guthrie Clinic, Guthrie Robert Packer Hospital</p>
1:20 p.m. – 1:35 p.m.	<p>Emergency Trauma Providers as Equal Partners: From “Proof of Concept” to “Outcome Parity”</p> <p><u>Presented by:</u> Kathryn C. Kelley, MD General Surgery Resident – PGY-1 St. Luke’s University Health Network, St. Luke’s Hospital Bethlehem</p>
1:40 p.m. – 1:55 p.m.	<p>Bronchoscopy Decreases Ventilator-Associated Pneumonia in Trauma Patients</p> <p><u>Presented by:</u> Jennifer Silvis, DO General Surgery Resident – PGY-5 Conemaugh Memorial Medical Center</p>

2:00 p.m. – 2:15 p.m.	BREAK ▪ COMMONWEALTH BALLROOM FOYER
2:15 p.m. – 2:30 p.m.	<p>Concurrent Rib & Sternum Plating: A Case Study</p> <p><u>Presented by:</u> Michael Romani, MD General Surgery Resident – PGY-1 Abington Hospital – Jefferson Health</p>
2:35 p.m. – 2:50 p.m.	<p>Identification of Seniors at Risk (ISAR) Scoring in Geriatric Trauma: Exploring Clinical Outcome Correlations</p> <p><u>Presented by:</u> Stephen Dingley, DO General Surgery Resident – PGY-3 St. Luke’s University Health Network, St. Luke’s Hospital Bethlehem</p>
2:55 p.m. – 3:10 p.m.	<p>What Happens to Gunshot Wound Survivors? A Comprehensive Assessment of Long-Term Outcomes After Firearm Injury</p> <p><u>Presented by:</u> Alexander Warshauer, MD General Surgery Resident – PGY-1 Hospital of the University of Pennsylvania</p>
3:15 p.m. – 3:30 p.m.	<p>Isolated Rib Fractures in the Elderly: Is it a Disproportionate Cost to the Trauma Service?</p> <p><u>Presented by:</u> Jacob Katsnelson, MD General Surgery Resident – PGY-2 Abington Hospital – Jefferson Health</p>
3:35 p.m. – 3:50 p.m.	<p>The Effect of Obesity in Trauma</p> <p><u>Presented by:</u> Justin Hatchimonji, MD General Surgery Resident – PGY-4 Hospital of the University of Pennsylvania</p>
3:55 p.m. – 4:10 p.m.	<p>Supratherapeutic INR in the Elderly Trauma Patient: Is it Lethal? Emailed 10/12</p> <p><u>Presented by:</u> Lili Sadri, MD General Surgery Resident – PGY-2 Abington Hospital – Jefferson Health</p>

4:15 p.m. – 4:30 p.m.	Evaluation of Cervical Spine Injuries in the Pediatric Population <u>Presented by:</u> Jayesh Gupta M.D. Student Drexel University College of Medicine, Class of 2021 St. Christopher’s Hospital for Children
4:45 p.m.	Awards Ceremony

PRESENTED BY THE PENNSYLVANIA COMMITTEE ON TRAUMA

8th ANNUAL POSTER & NETWORKING RECEPTION

Forbes Hospital—Allegheny Health Network, Monroeville, Pa. presents:

Development of a Structured Process for Inter-Rater Reliability

Author(s): Cynthia Anthony, MSN, RN; Mike Taramelli, RN, MBA/HCM, BSN, CEN, TCRN; Joni Krydick; Karen DeSimone; Judy Kiss, CPC

Forbes Hospital—Allegheny Health Network, Monroeville, Pa. presents:

Improving the Timeliness of Submission of Registry Data

Author(s): Cynthia Anthony, MSN, RN; Mike Taramelli, RN, MBA/HCM, BSN, CEN, TCRN; Joni Krydick; Karen DeSimone; Judy Kiss, CPC

Jefferson Health Torresdale, Philadelphia, Pa. presents:

Shifting the Culture from What's Wrong to What Happened

Author(s): Michelle Conley, DNP, MBA, RN; Tricia Nichols, MSN, RN; Noreen Quinn, BSN, RN; Donna Titus, MSN, RN; Diane Yapple, LPC

PENN Medicine/Lancaster General Health, Lancaster General Hospital, Lancaster, Pa. presents:

Analysis of Outcomes Post-Operative Management of Truncal GSW at Level 1 versus Level 2 Trauma Centers

Author(s): Chet A. Morrison, MD, FACS; Daniel Wu, DO, FACS; Tawnya Vernon, BA; Alan D. Cook, MD, FACS; Brian W. Gross, BS; Madison Morgan; Frederick B. Rogers, MD, MS, FACS

PENN Medicine/Lancaster General Health, Lancaster General Hospital, Lancaster, Pa. presents:

Early Analysis of the Process of Care of Level 4 Trauma Centers within an Organized System

Author(s): Tawnya M. Vernon, BA; Shreya Jammula, BS; Frederick B. Rogers, MD, MS, FACS; Brian W. Gross, BS; Alan D. Cook, MD, FACS; CPP Susan Schultz, MD; Jeanette Ward, MS-CR; Eric H. Bradburn, DO; Juliet Altenburg, MSN, RN

PENN Medicine/Lancaster General Health, Lancaster General Hospital, Lancaster, Pa. presents:

Hospital Bed Size and Annual Trauma Volume: A Potential Predictor for Identifying Future Trauma Centers?

Author(s): Michael A. Horst, PhD; Tawnya M. Vernon, BA; Shreya Jammula, BS; Brian W. Gross, BS; Alan D. Cook, MD, FACS; Eric H. Bradburn, DO; Frederick B. Rogers, MD, MS, FACS

PENN Medicine – Penn Presbyterian Medical Center, Philadelphia, Pa. presents:

Trauma Induced Platelet Dysfunction Monitored by TEG is Not Corrected by Transfusion

Author(s): Lily Tung, MD; Varun Danda, BS; Antonio Davila, PhD; Scott Diamond, PhD; Carrie Simms, MD, PhD

PENN Medicine – Penn Presbyterian Medical Center, Philadelphia, Pa.,
Temple University Hospital, Philadelphia, Pa. and Emory University, Atlanta, Ga. present:

Using Arterial Pressure Index to Predict Arterial Injuries in Penetrating Trauma to the Upper Extremities

Author(s): Lily Tung, MD; Mark J. Seamon, MD; Elizabeth Dauer, MD; Jesse Passman, BS; Caitlin Fitzgerald, MD; Brone Lobischusky, BA; Michael Mazzei, MD; Wendy Rodriguez, BS; Randi N. Smith, MD, MPH

St. Christopher's Hospital for Children, Philadelphia, Pa. presents:

Effectiveness of a Safe Sleep Practice Educational Intervention to Promote Behavior Change

Author(s): Rochelle Thompson, MS; Autumn Nanassy, MA; Loreen Meyer, MSN, RN; Eileen Tyralla, MD, FAAP

St. Christopher's Hospital for Children, Philadelphia, Pa. presents:

Nursing Perceptions of Cohorting Trauma Patients to One Medical/Surgical Unit at a Level One Trauma Center to Enhance Interdisciplinary Collaboration and Quality Care

Author(s): Loreen Meyer, MSN, RN; Autumn Nanassy, MA; Heather Lavella, BSN; L. Grier Arthur, MD; Harsh Grewal, MD

St. Christopher's Hospital for Children, Philadelphia, Pa. presents:

The Use of ReCell in a Pediatric Burn Patient at an Urban Burn Center

Author(s): Wellington Davis III, MD; Autumn Nanassy, MA; Brooke Burkey, MD; Amit C. Misra, MD; Loreen Meyer, MSN, RN; Lisa Gates, RN; Paul Glat, MD

St. Luke's University Health Network Miner's Campus, Coaldale, Pa.

St. Luke's University Health Network Quakertown Campus, Quakertown, Pa. and

St. Luke's University Health Network St. Luke's Hospital Bethlehem, Bethlehem, Pa. present:

“STAT” Scan, Improving ED Throughput by Early Identification of Traumatic Brain Injury

Author(s): Kristie Leshko, MSN, RN; Aaron Ratner, DO; Z. Trevor Ritz, DO; William Hoff, MD; Rebecca Wilde-Onia, MSN, RN, CCRN, TCRN

St. Luke's University Health Network St. Luke's Hospital Bethlehem, Bethlehem, Pa. presents:

PTSD: The Invisible Trauma

Author(s): Nicole Lohrman, MSN, RN, CCRN, TCRN; William Hoff, MD, FACS; Danielle Bennett, PA-C; James A. James III, DO; Amie Allason-Dundon, MS, LPC, CCDP-D, BCPC; Rebecca Wilde-Onia, MSN, RN, CCRN, TCRN; Peter Thomas, DO, FACOS, FACS

UPMC Mercy, Pittsburgh, Pa. presents:

UPMC Mercy Trauma Services & GRIPS Intervention to Prevent Violence

Author(s): Anna Murray, BSN, RN, CCRN; Rashida Henderson, BS, MBA, MSN, RN, CMSRN; Richard Garland, MSW; Brianna McDonough, MPH

UPMC Hamot, Erie, Pa. presents:

Finding Beauty after Tragedy: Bad Things Can Lead to Good

Author(s): Sarah L. Mattocks, MSN, RN, CRNP, TCRN, NE-BC

UPMC Hamot, Erie, Pa. presents:

Leaders of the Pack: Early Initiation & Implementation of Stop the Bleed

Author(s): Amanda Alberico, BSN, RN-BC, TCRN

UPMC Presbyterian, Pittsburgh, Pa. presents:

Collaboration with Trauma Surgeons and OR Leadership to Improve the Delivery of Surgical Care for Trauma Service Inpatients

Author(s): Anita Soltez, MSN, RN, CNOR; Louis Alarcon, MD, FACS; Shawn T. Beamon, MD; Brian Zuckerbraun, MD, FACS; Ave Perrino, MSN, RN, CNOR; Ashley Edwards, BSN, RN, CNOR

UPMC Presbyterian, Pittsburgh, Pa. presents:

Trauma ICU Patient Outliers

Author(s): Kevin Adams, MSN, MBA, RM, CCRN; Dederia Nicholas, MSN, RN; Katherine Spiering, MSN, RN, CCRN; David A. Bertoty, MSN, RN, NEA-BC